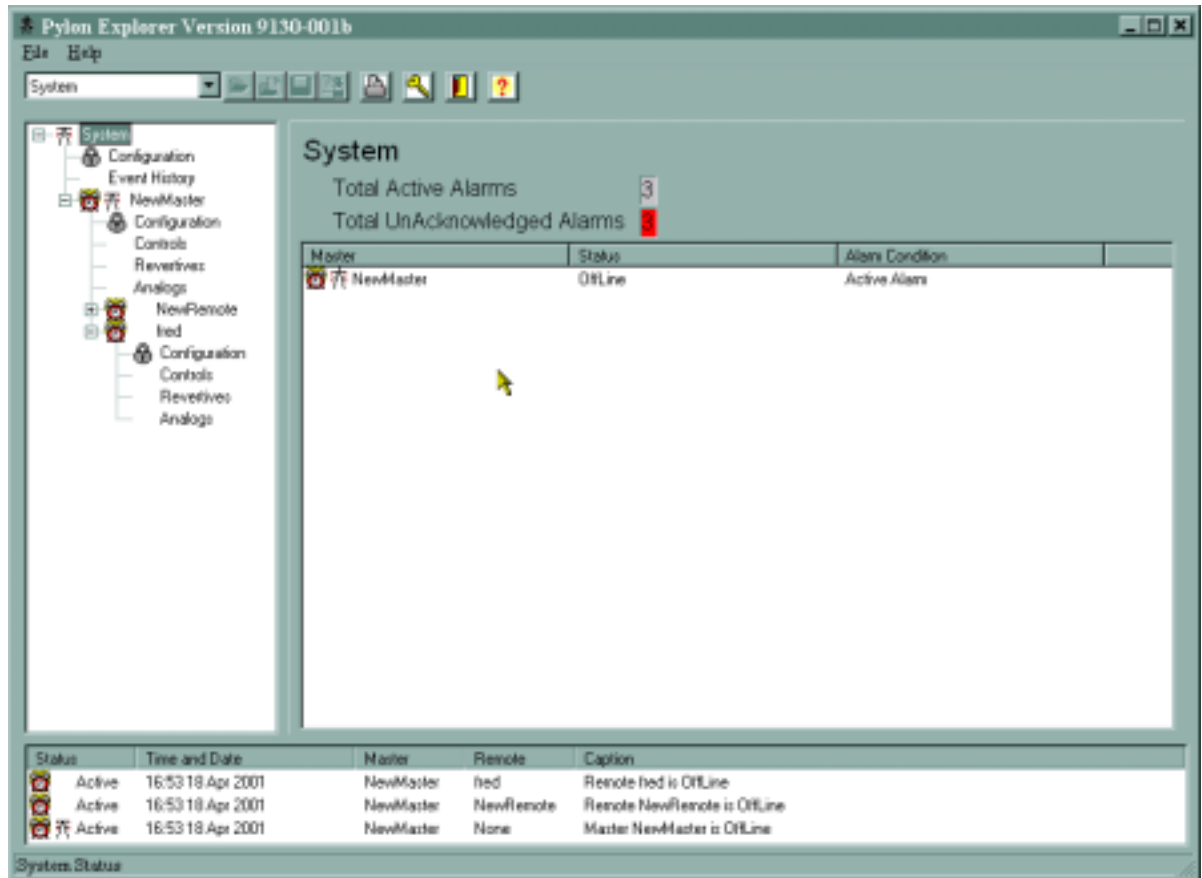


PylonGDS-Explorer : Remote Control Software System



The Pylon GDS system is a general purpose, graphic display system for operator inter-action and control of intelligent plant equipment. The PylonExplorer has been configured for use with outstation equipment, to fully automate the remote monitoring and control of equipment sites from a central location.

Description:

The PylonExplorer software is connected to the remote sites via standard PC LAN or serial communication channels to Master EPC outstations. These Master units in turn are responsible for supervision of remote EPC units over a 64KBps synchronous RS485 radio network.

Complete control of remote site equipment is available, together with tell-backs and monitoring of digital status and analogue measurement inputs.

All data events and alarms are printed in an audit trail and recorded to disk where they are available for review, or export to spreadsheet packages.

Features: -

- Industry standard IBM PC compatible
- Multi platform Windows GUI
- Standard 'Explorer' type interface
- User configurable
- Multi-Site User Interface
- Comprehensive context sensitive on-line help
- Continuous alarm supervision
- Controls with Tell-backs
- Status Alarms
- Scalable Analogue Inputs
- Configurable alarm sound files
- Recorded Event History
- Alarm audit trail printout
- Exportable spreadsheet data

Note: Product revisions may vary from the details given here.

For Further Information:

Web: www.customelectronic.demon.co.uk

Tel:+44 (0) 1767 313167

Fax:+44 (0) 1767 313167

PylonGDS-Explorer : Remote Control Software System

Relay Controls:



A user friendly GUI allows the user to control the magnetically latching (remnant) relay outputs in the EPC controllers at the remote sites. Tell-back revertive inputs can be configured to provide operator confirmation of final action at the site. Each remote outstation and its control names are configurable by the user with password control. Control changes generating alarm conditions are automatically annunciated and recorded.

Revertive Status Inputs:



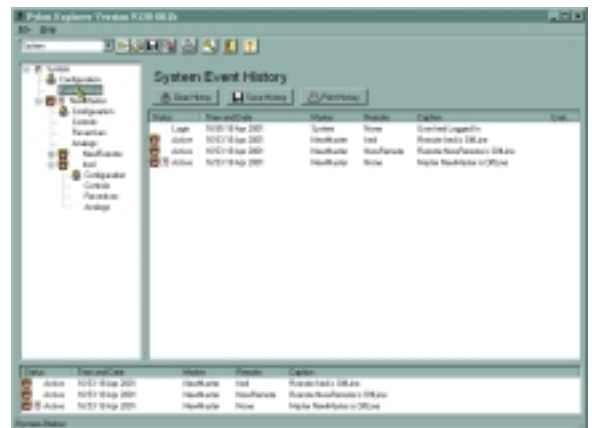
The user can monitor the status of the revertive status inputs in the EPC controllers at the remote sites. Each remote outstation and its revertive names are configurable by the user with password control. Revertive changes generating alarm conditions are automatically annunciated and recorded.

Analogue Inputs:



The user can monitor the status of the analogue measurement inputs in the EPC controllers at the remote sites. Each remote outstation and its analogue names are configurable by the user with password control. Analogue changes generating alarm conditions are automatically annunciated and recorded.

System Event History:



All data events and alarms are printed in an audit trail and recorded to disk where they are available for review, or export to spreadsheet packages.

Note: Product revisions may vary from the details given here.

For Further Information:

Web: www.customelectronic.demon.co.uk

Tel:+44 (0) 1767 313167

Fax:+44 (0) 1767 313167