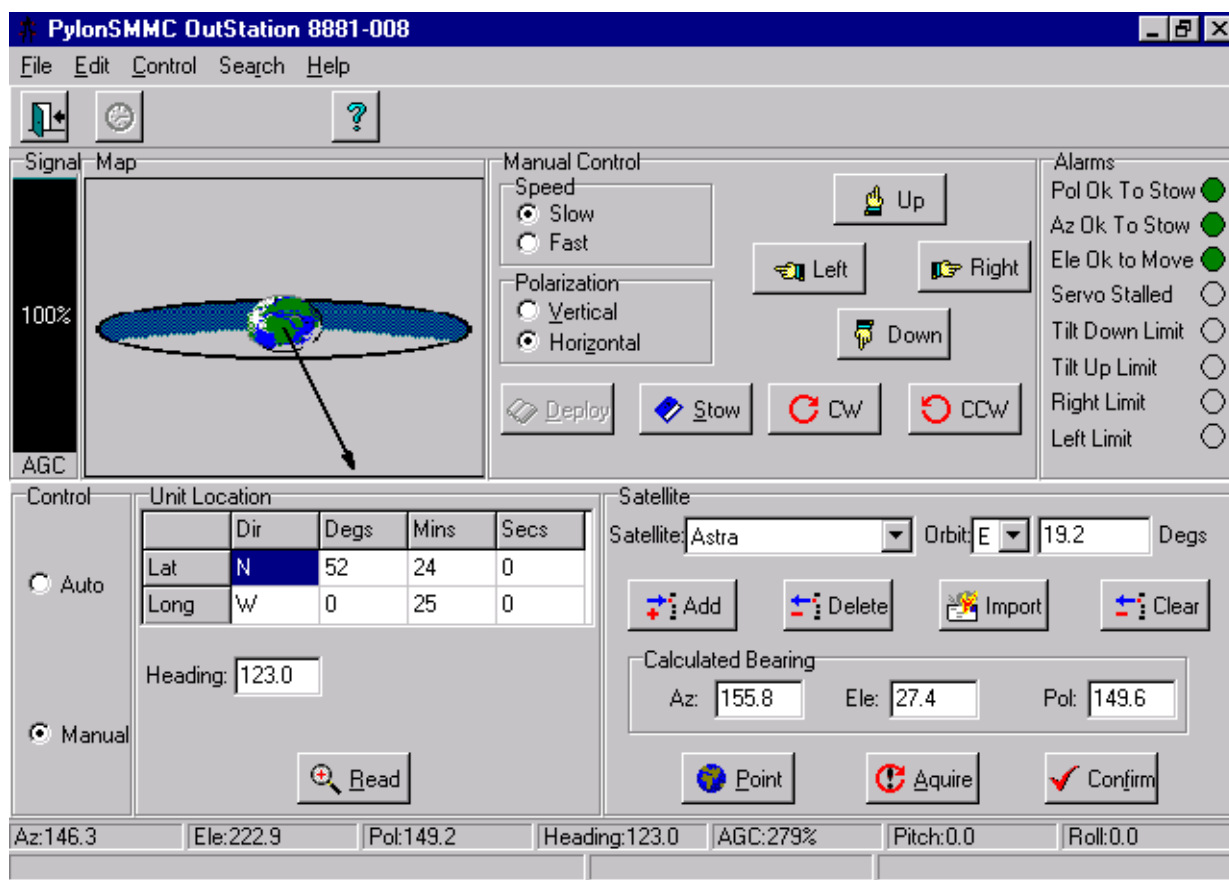


## PylonSMMC : Satellite Mount Control Software System



The Pylon GDS system is a general purpose, graphic display system for operator inter-action and control of intelligent plant equipment. The SMMC variant has been configured for use with satellite broadcast antenna mounts and equipment, to fully automate the remote control of truck mounted SNG Ae from a central location.

### Description:

The Pylon software runs in an 8881 PylonEPC Controller and is connected to the antenna through a local control unit, and to a roof mounted GPS and Compass box.

The software automates the tasks of Deploying, Pointing to and the Acquiring of a desired satellite, together with: -

- Confirm facility for calibration
- GPS and Compass reading
- Search facility for the peak signal
- Compensation for pitch and roll effects

Full orbit site recall from a stored database of 1000 records

### Features: -

- Industry standard IBM PC compatible
- Multi platform Windows GUI
- User configurable
- Full on-line diagnostics
- Complete manual and automatic antenna control
- GPS Location and Heading facilities
- Multi-Site User Interface
- Comprehensive context sensitive on-line help
- Continuous alarm supervision
- Pitch and Roll compensation
- Inclined orbit facilities

Note: Product revisions may vary from the details given here.

### For Further Information:

Web: [www.customelectronic.demon.co.uk](http://www.customelectronic.demon.co.uk)

Tel:+44 (0) 1767 313167

Fax:+44 (0) 1767 313167